

WATERPROOFING

WATER SEALING

STRUCTURAL REPAIR

SOIL CONSOLIDATION

TRADECC

The logo for TRADECC features the company name in a bold, white, sans-serif font. The letters 'A', 'E', and 'C' are notably tall. A white, curved swoosh or underline element starts under the 'A', loops under the 'E' and 'C', and ends under the second 'C', creating a dynamic, modern look.

Founded in the 1990's, as part of the ECC group, TRADECC nv is responsible for the worldwide sales of in-house developed construction chemicals based on polyurethane, acrylic, silicate and epoxy. We excel in waterproofing of construction joints, resins for water sealing and soil consolidation, repair mortars and carbon fibre materials for the repair and reinforcement of structures.

From our head office in Antwerp, Belgium, we serve carefully selected distributors and applicators worldwide. We offer our partners and their customers in the building industry, civil and underground construction individual advice, while leveraging our technical and chemical knowledge and expertise in the research, development, production and application of innovative and sustainable construction chemicals.

www.tradecc.com

SOLUTIONS

- Waterproofing Construction Joints
- Water Sealing
- Structural Repair
- Soil Consolidation

SERVICES

- On-site technical and chemical assistance and training
- Customized product development
- Private labelling options
- Sales support
- Technical review and assistance
- Project specifications
- Support by international reference application
- In house technical and chemical training

WATERPROOFING CONSTRUCTION JOINTS

Preventive protection against water seepage can seem expensive and unnecessary. On the other hand, leakage treatment leads to unforeseen costs and most likely an overshooting of the budget and timing. TRADECC's hydrophilic swell strips and sealant kit are a durable and easy to install waterproofing solution. They water seal concrete construction joints, pipe penetrations and joints between prefab concrete elements. The materials have no effect on the reinforcement and formwork of the system.

SOLUTIONS

SWELL STRIPS

- **PC® Bentostrip**
Hydrophilic swell strip composed of natural sodium bentonite clay and rubber.
- **PC® Elastoswell**
Swell strip that consists of a polymer swelling substance and that will swell more than 10 times its volume.

SWELL SEALANT KIT

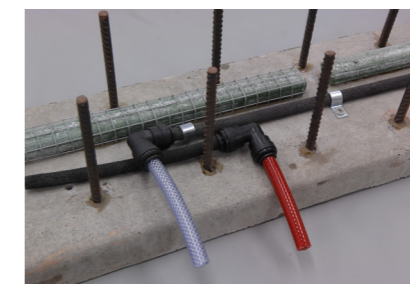
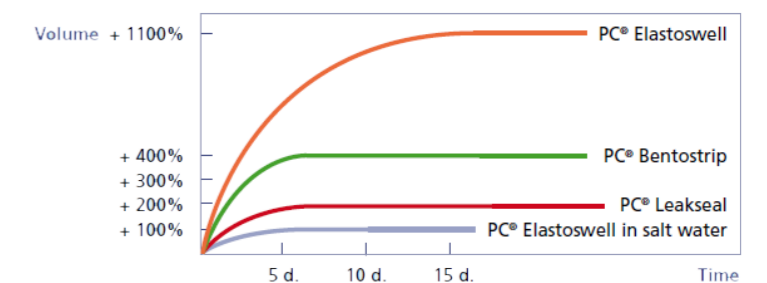
- **PC® Leakseal**
Polyurethane liquid, swelling sealing kit and adhesive layer for swell strips.

INJECTION HOSE

- **PC® Injectra**
(Re-)Injectable hose installed in construction joint structure. Compatible injection resins are available.

APPLICATIONS

- Tunneling
- Underground infrastructures
- Water treatment facilities
- Dams
- Precast concrete structures
- Basements and foundations
- Industrial buildings



WATER SEALING

Water infiltration is caused by geological or hydrological conditions of the soil, defects in the design or construction, or extreme weather conditions. It affects the stability, durability, safety and realisation of buildings and infrastructures. TRADECC's water sealing solutions resolve water leakage coming through a.o. cracks and holes in joints, walls, floors, foundations and concrete constructions. With their rapid reaction time and high expansion volumes, they even block leakages with a high flow or high hydrostatic pressure.

SOLUTIONS

ACRYLIC INJECTION RESINS

- **PC® 509 Z Acryl**
Standard gel for sealing cracks and voids.
- **PC® 509 ZL Acryl**
Gel for (re-)injection of hoses or membranes.
- **PC® 509 Rubber Acryl**
Tough, highly elastic acrylic injection resin with exceptional adhesion properties, suited for curtain injections.

RISING DAMP IN WALLS

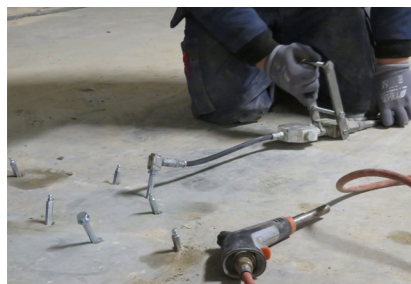
- **PC® Aquadry Gel**
Silane/siloxane impregnation gel.

CEMENTITIOUS WATER SEALING

- **PC® Cristal Concentrate**
Cement based slurry coat.
- **PC® Cristal Patch 'n Plug**
Quick setting cement.

APPLICATIONS

- Tunneling
- Civil engineering
- Underground infrastructures
- Mining
- Dams
- Masonry and industrial buildings
- Earth retaining structures
- Particular potable and sewage water facilities
- Concrete constructions
- Building pits



SOIL CONSOLIDATION

A stable soil is fundamental in the design and construction of any structure as it ensures a long term durability. Soil consolidation takes poor quality soil and turns it into a valuable engineering material, improving the load bearing capabilities. Moreover, soil consolidation by injection can reroute water flow, limit dewatering systems and water ingress when constructing big underground infrastructures. TRADECC excels with polymer and silicate injection resins. They allow a deeper penetration into the soil and finest cracks, which increases the stability of the soil structure.

SOLUTIONS

POLYURETHANE INJECTION RESINS

Permanent soil stabilization

- **PC® Leakinject Soil 6805 N**
Water-reactive PU injection resin forming a very rigid foam. Installs a water-inhibiting layer.

Temporary soil stabilization

- **PC® Leakinject Flex Range**
Water-reactive PU injection resins forming a flexible foam.

SILICATE INJECTION RESINS

- **PC® Silica-Inject CS**
Ultra-low viscous mineral grout, suited for pre- and post-injection in tunneling. Complementary to microcement injections.
- **PC® Silica-Inject 6740 Foam**
Highly reactive, highly foaming, two-component organo-mineral injection resin for filling voids and consolidating loose rocks.
- **PC® Silica-Inject 6730 Solid**
Two-component organo-mineral non-foaming injection resin for consolidating loose rock, filling cracks and crevices in rock and concrete.

APPLICATIONS

- Foundations
- Quay walls
- Building excavations
- Tunneling
- Retaining walls
- Restraining underground water flows
- Potable and sewage water facilities
- Mining

POLYMER INJECTION RESINS

- **PC® Tunnelinject Range**
Injection resins specially designed for stopping high water pressure in tunneling and mining.



STRUCTURAL REPAIR

Although concrete, masonry, steel and wood are considered maintenance-free construction materials, their durability can be affected by internal and external conditions. For every structural problem or renovation TRADECC proposes a tailor made repair or reinforcement strategy, leaning on our various repair methods. Our products can be used for the repair and reinforcement of beams, slabs, walls and columns. We fix construction and design errors, increase or repair the original load bearing capacity and strengthen constructions when making openings in floor plates or walls.

SOLUTIONS

CARBON FIBRE REINFORCED POLYMER (CFRP) TECHNOLOGY

- **PC® Carbocomp Range**
Unidirectional laminates for flexural strengthening of slabs.
- **PC® Carbocomp Textile Range**
Textiles for shear strengthening of beams and the reinforcement of columns.

EPOXY BASED MATERIALS

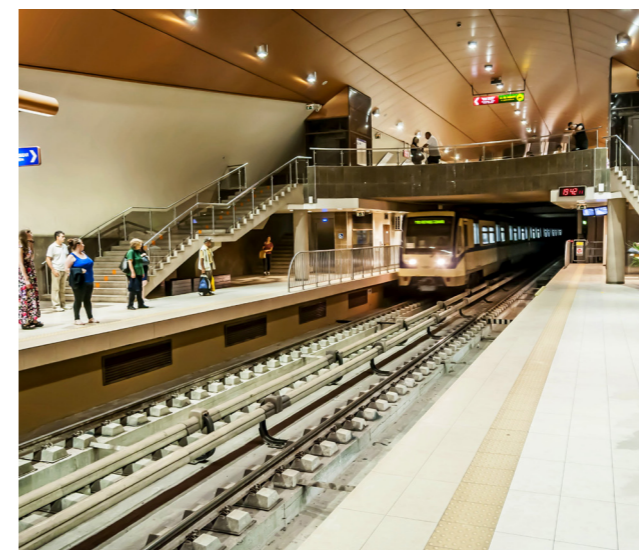
- **PC® 5800 Range**
Two-component epoxy based primer, glues and impregnating resins for CFRP laminates and textiles.
- **PC® 5187 Range**
Wide offering of epoxy repair mortars.
- **PC® Structo-Inject Range**
Two-component epoxy injection resins.

APPLICATIONS

- Tunneling
- Civil engineering
- Concrete, wood, steel constructions
- Crane traces
- Machine foundations
- Rail reinforcement



REFERENCES



BULGARIA - METRO SOFIA

- Prevent leakage in joints of helical segments of tunnel construction and waterproof area between helical segments of tunnel construction and soil.
- Reinforcement of a cracking retaining wall that supports the soil of the stations.

SOLUTIONS

- Injection resins (60 tons):
PC® Leakinject 2K Flex 6811 LV
PC® Leakinject Uni 6816 E & EVL
PC® 509 Rubber Acryl
- CFRP (400 m):
PC® Carbocomp Plus
PC® 5800 BL
- Work joints (20 km):
PC® Elastoswell 20x10mm
PC® Injectra



QATAR - METRO DOHA

- In several stations in the metro of Doha the expansion joints were showing leakage on various levels.
- The waterproofing PVC membrane system behind the concrete was inaccessible for repair, due to backfill materials that cover the structure.
- Water leakages in ceiling and walls of tunnel due to underground activities related to tunnel excavation.

SOLUTIONS

- Acrylate Injection resins (31 tons):
PC® 509 Rubber Acryl
PC® 509 ZL Acryl



DENMARK - METRO COPENHAGEN

- Leaking joints in the tunnel shafts.
- Extreme high water pressure due to depth of shafts and groundwater level.
- Approval from local authorities for use of injection resin in tunnel project.

SOLUTIONS

- Polyurethane injection resin (36 tons):
PC® Leakinject Uni 6816 E

THE POWER IN YOUR CONSTRUCTION

TRADECC **ECC** **ETEC** **PRODECC**


TRADECC reserves the right, depending on the evolution of knowledge and techniques, to change the composition and terms of use of its products without notice.

All products must be implemented according to the correct technical and chemical specifications to achieve proper operation and results.

@ Copyright TRADECC nv. All rights reserved.



TRADECC nv
Terbekehofdreef 50-52
BE - 2610 Antwerpen

T +32 3 828 94 95
E info@tradecc.com
 www.tradecc.com

TRADECC